

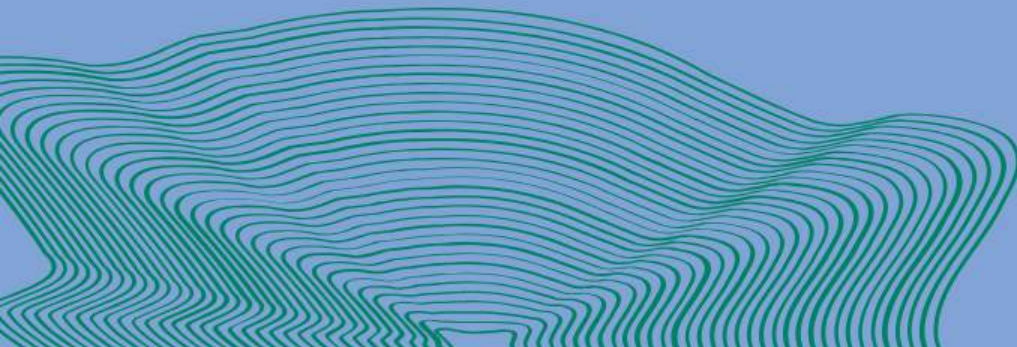
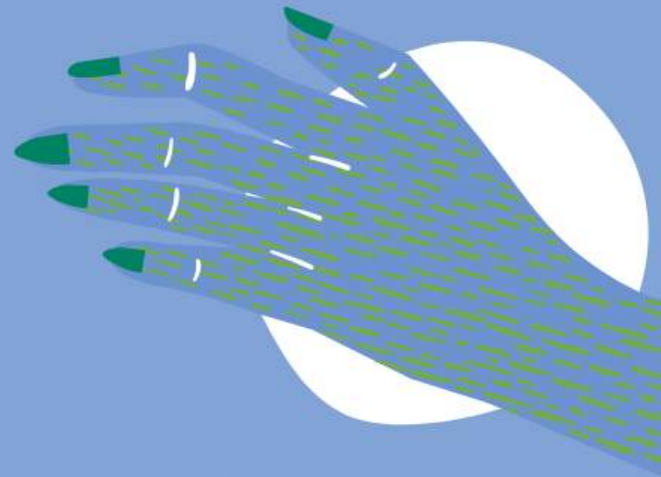
#ReimaginingResilience | #GenderEquityDuringAPandemic | @YWCA_Canada

GENDER EQUITY DURING A PANDEMIC

(AN ONLINE TOWNHALL)

APRIL 1ST, 2020

JEN GAMMAD LOCKERBY
ANJUM SULTANA, MPH



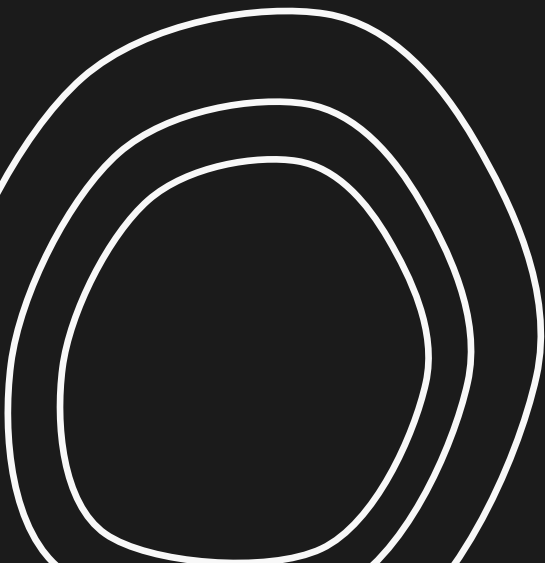
YWCA
CANADA

NATIONAL ADVOCACY.
COMMUNITY ACTION.
UNE VOIX NATIONALE.
DES ACTIONS LOCALES.

LAND ACKNOWLEDGEMENT

This presentation is being hosted on the traditional territory of the **Wendat**, the **Anishnaabeg**, **Haudenosaunee**, **Métis**, and the **Mississaugas of the New Credit First Nation**.

Tkaronto, also known as Toronto, is now home to many diverse First Nations, Inuit and Métis peoples.



FACILITATORS



ANJUM SULTANA, MPH



JEN GAMMAD LOCKERBY

ABOUT US

NATIONAL ADVOCACY

Pan-Canadian perspective in 9
provinces & 2 territories

+

COMMUNITY ACTION

On the ground service
delivery for 150 years

=

**PEOPLE POWERED
SYSTEMIC CHANGE**

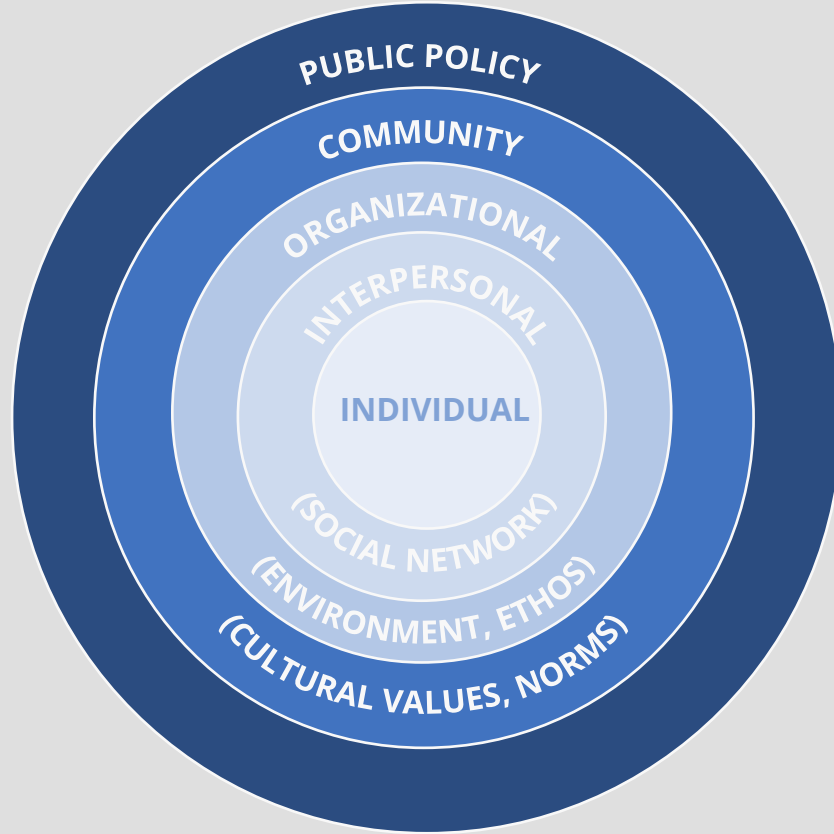


AREA OF FOCUS

Transformative

Upstream

Prevention



LET'S HEAR ABOUT YOU

- 1 Where are you joining us from?
- 2 Where do you spend most of your time (sector)?
- 3 Which generation do you belong to?

Use the polling
function!

TODAY'S AGENDA

- 1 Why We Need To Approach COVID-19 With An Intersectional Lens
- 2 Snapshots Of The Pandemic: Challenges & Responses (20 minutes)
- 3 Townhall Discussion (40 minutes)
- 4 Open Space / Resource Sharing (10 minutes)





WHY WE NEED TO APPROACH COVID-19 WITH AN INTERSECTIONAL LENS

#ReimaginingResilience | #GenderEquityDuringAPandemic | @YWCA_Canada

SOCIAL DETERMINANTS OF HEALTH

50%	YOUR LIFE	INCOME EARLY CHILDHOOD DEVELOPMENT ABILITY EDUCATION SOCIAL EXCLUSION SOCIAL SAFETY NET GENDER IDENTITY EMPLOYMENT RACE INDIGENOUS STATUS NUTRITIOUS FOOD HOUSING/HOMELESSNESS COMMUNITY BELONGING
25%	HEALTH CARE	ACCESS TO HEALTH CARE HEALTH CARE SYSTEM MEDICAL OPPRESSION / QUALITY OF CARE WAIT TIMES
15%	BIOLOGY	BIOLOGY GENETICS
10%	ENVIRONMENT	AIR QUALITY CIVIC INFRASTRUCTURE

Social factors

largely impact health outcomes

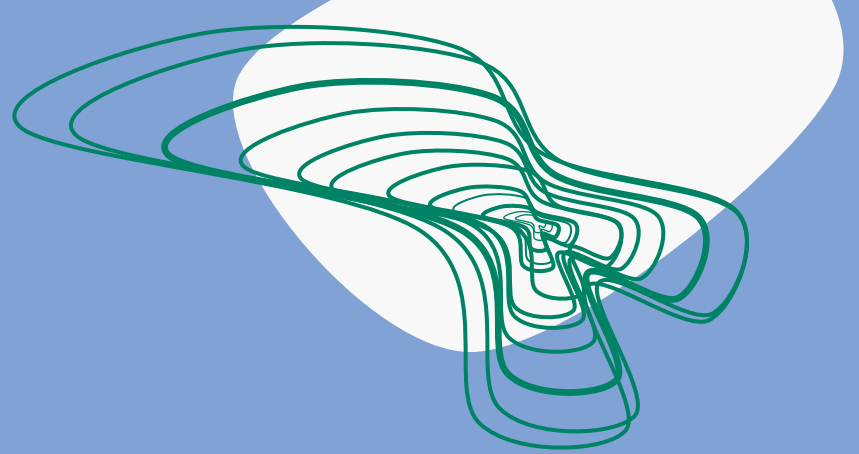
In other words...

Health is political!

CRISES OFTEN ENTRENCH INEQUITIES

- Women are on the frontlines, too
- Women have the additional duty of caring for families and communities
- Women are often excluded from decision-making at many levels, and their needs are de-prioritized in response efforts





SNAPSHOTS OF THE PANDEMIC **CHALLENGES & RESPONSES**

COVID AT WORK



CHALLENGES

- Majority of layoffs are in women-dominated sectors (retail, food service)
- On the other hand, essential workers are majority women
- Personal Protective Equipment (PPE) shortage for essential workers

**Who is essential?
Who is sacrificial? Disposable?**

COVID AT WORK



RESPONSES

- Canada Emergency Response Benefit (CERB) - \$2000/month
- Employment Insurance changes

CARE WORK AT HOME

CHALLENGES

- Unpaid care duties at home
- **Triple** burden of care during a pandemic

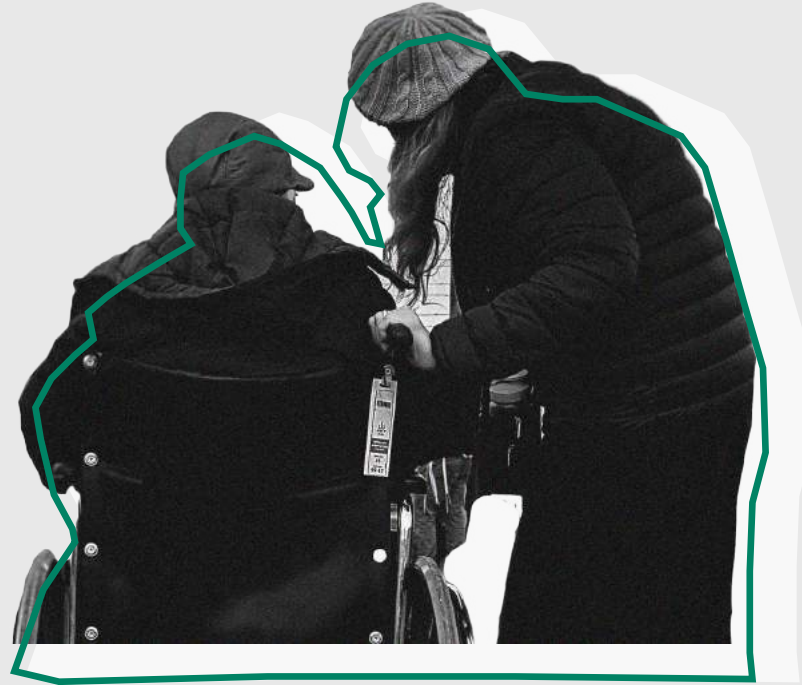


UNPAID CARE WORK

RESPONSES

- Boosts to Canada Child Benefit
- Mutual Aid Groups: Community care built on the lineages of care of people historically excluded from state support

**But mutual aid should only be
complementary to a robust social
safety net**



COVID AT HOME

CHALLENGES

- Housing insecurity and homelessness
- Home is not always a safe place



COVID AT HOME

RESPONSES

- \$157.5 million for Reaching Home
- \$50 million for shelters and sexual assault centres
- Mortgage Deferrals...

What about renters?



SERVICE DELIVERY DURING COVID

CHALLENGES

- **Increased demand** on essential services
- Yet **limited support** for organizations providing services
- People falling through the cracks –e.g. Service Canada closures

**Substantial focus on healthcare...
what about other services?**



SERVICE DELIVERY DURING COVID

RESPONSES

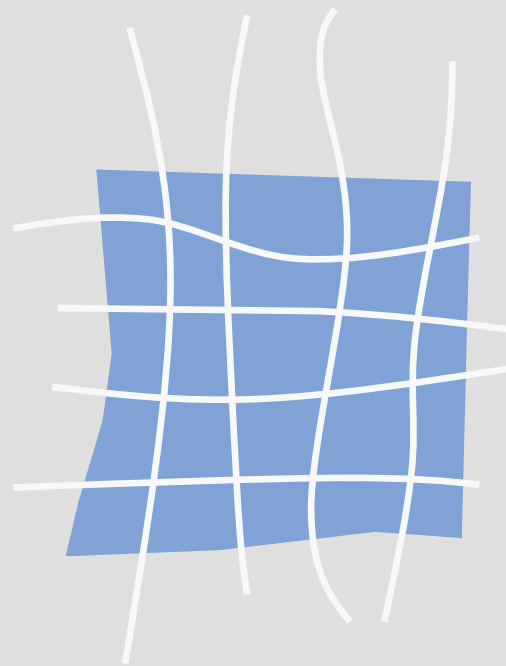
- Uneven responses from provinces and territories for many essential services (e.g. child care)
- Temporary Wage Subsidy – from 10% to 75%

Are responses centering those who need support most?

STRENGTHENING THE SOCIAL SAFETY NET DURING/POST COVID-19

- 1 Speed and immediacy of responses
- 2 Adequacy – are we doing enough?
- 3 Equity - Who are we missing?

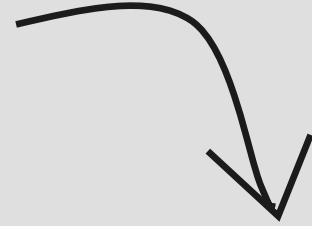
It doesn't always look like this – differing responses in different countries



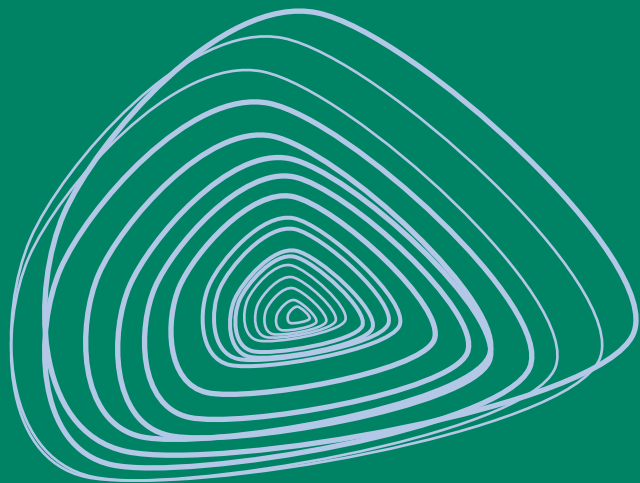
TELL YOUR REPRESENTATIVES:

WE NEED A FEMINIST APPROACH TO COVID-19

- 1** Establish Paid Sick Leave for All Workers
- 2** Fund Emergency Child Care for Essential Workers
- 3** Create an \$8 Billion Emergency Fund for Charities and Non-Profits



<https://ywcacanada.ca/take-action/act-now/a-feminist-approach-to-covid-19/>

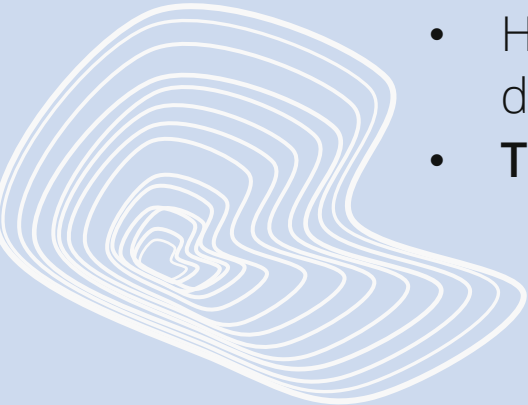


TOWNHALL

#ReimaginingResilience | #GenderEquityDuringAPandemic | @YWCA_Canada

PURPOSE

- Share perspectives, challenges, strategies, and resources related to the **a) gendered, b) intersectional** and **c) intergenerational impacts**
- We want to know:
 - How can you or your communities be supported during and after COVID?
 - **Three Rs: Response, Recovery, Reimagining**

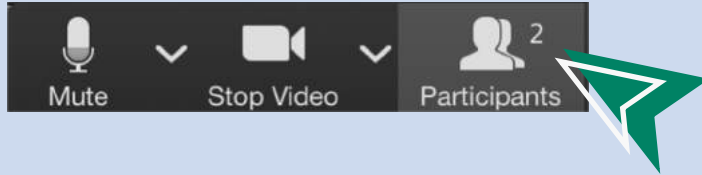


RULES OF ENGAGEMENT

- **Speak from your own experiences** rather than generalizing
- Use **content warnings** for graphic content
- **Share the space**
- Please rename yourself if you wish to remain **anonymous**



WAYS TO ENGAGE



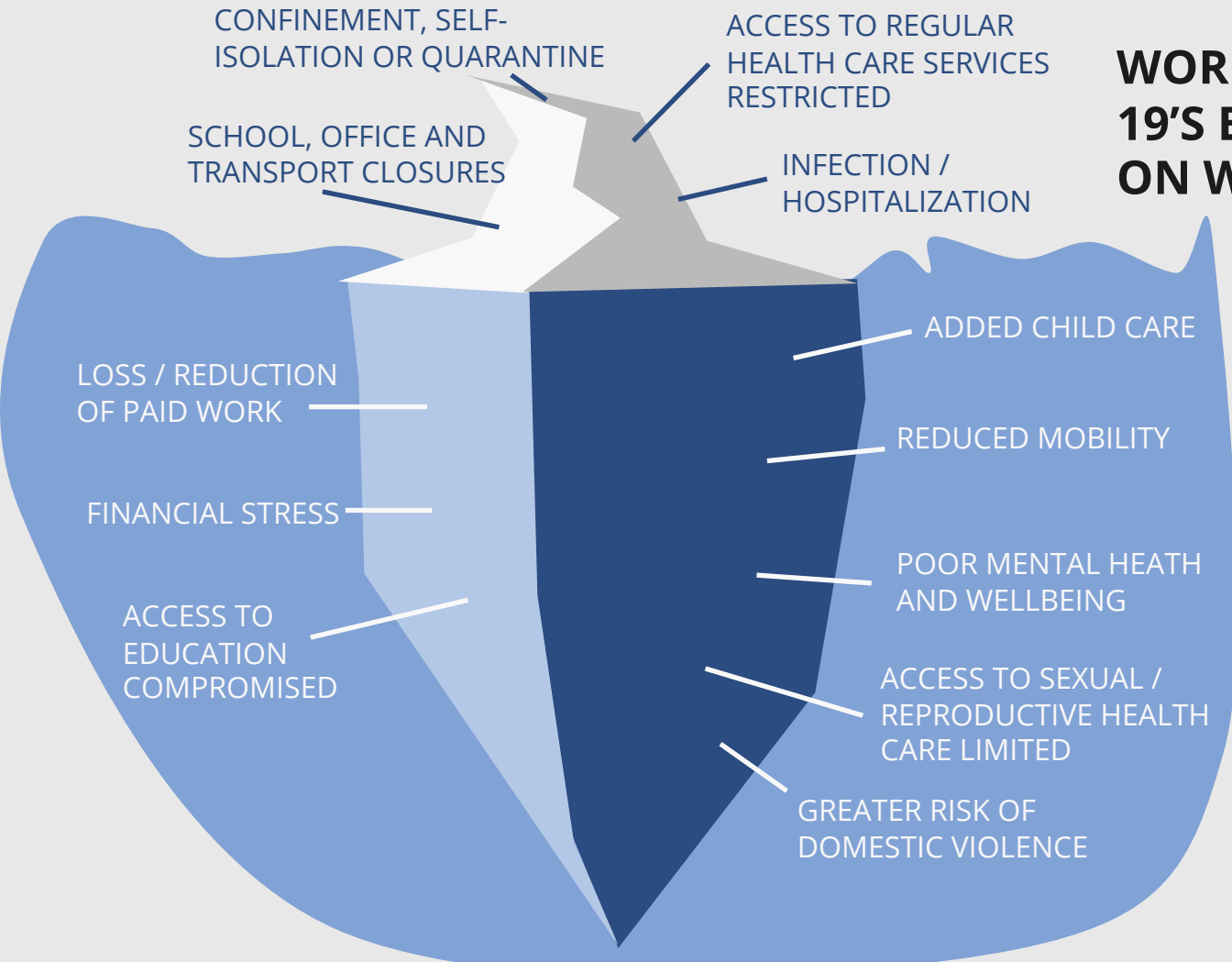
- If you want to speak: **Raise hand** function
- Type comments or questions in the **chat**
- If you don't get a chance to share, don't worry!



IMPACTS

- Paid/unpaid care?
- Gender-based violence?
- Economic stress?
- Policing / criminalization?
- Job security? Job safety?
- Immigration?

WORLD YWCA: COVID-19'S BROADER IMPACT ON WOMEN AND GIRLS



IMMEDIATE RESPONSES

- Which workers / people have been left out of responses?
- What needs to be done now to mitigate suffering?

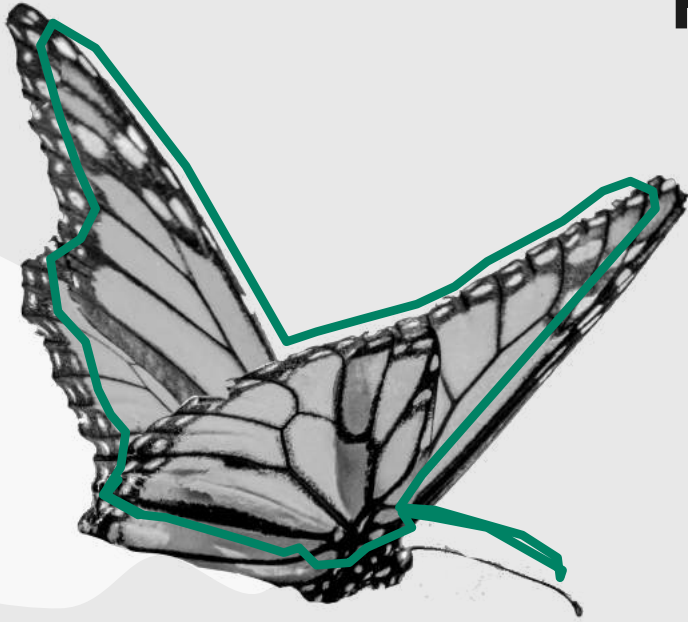




PATH TO RECOVERY

- How can we recover from the pandemic in an equitable way?
- What about essential institutional/sector recovery?

REIMAGINING THE FUTURE



- How do we center our economy on care, people?
- How do we make sure our post-COVID world is a just one?

IT'S YOUR TURN!

TOOLS?

RESOURCES?

ACTIONS?

ADVOCACY ASKS?

QUESTIONS?



STAY IN TOUCH!

@YWCA_Canada | www.ywcacanada.ca



YWCA
CANADA

NATIONAL ADVOCACY.
COMMUNITY ACTION.
UNE VOIX NATIONALE.
DES ACTIONS LOCALES.